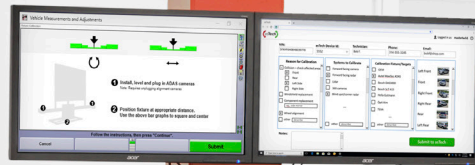


asTech ADAS Calibration Package

Expanded Safety System Alignment® coverage

FEATURING



Expand your ADAS calibration quality & capabilities

WinAlign®

Alignment System

- ✓ An extensive vehicle information database and vehicle-specific adjustment
- ✓ Four high-resolution cameras capture measurements and provide instant adjustment updates on-screen
- ✓ 90 seconds to alignment measurements
- ✓ OEM approved solution
- ✓ Best in class technician guidance
- ✓ Best in class alignment help tools
- ✓ Wheel Alignment a key step before ADAS calibration

with



Remote Calibration Services

- ✓ Expert technician help when you need it
- ✓ Up to date OEM level coverage, using the same tools as the dealer
- ✓ Secure Gateway supported connection
- ✓ No "coverage gap" for new model vehicles
- ✓ Calibration Report details work completed for shop and vehicle owners

Remote Diagnostic Services

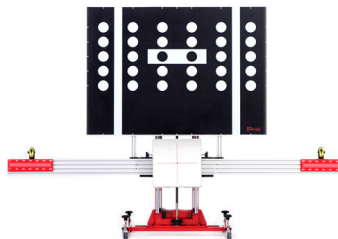
- ✓ Any OE scan tool function on-demand
- ✓ Calibrating
- ✓ Newest vehicle coverage

OEM Coverage:

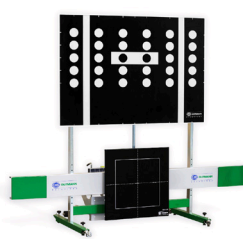


Contact your local Hunter Rep for further details

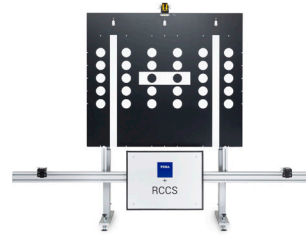
hunter.com/contact-hunter



Autel



Hella Gutmann



Texa



Hunter Camera Kit and Adaptors (20-3683-1) for use with non-Hunter ADAS Kit

Requires ADAS calibration fixtures sold separately. Not all brands are supported.

1120AH

Copyright © 2020, Hunter Engineering Company. MaxiSys is a copyright of Autel Intelligent Technology Company. TEXA is a copyright of TEXA SpA. CSC Tool is a copyright of Hella Gutmann Solutions GmbH. Because of continuing technological advancements, specifications, models and options are subject to change without notice.

HUNTER
Engineering Company

www.hunter.com

Form AH07827-00, 11/20
Supersedes form 7748-T, 03/20