

Alignment Accessories

**NOW INCLUDES SAFETY SYSTEM
ALIGNMENT EQUIPMENT**



CodeLink® and accessories

The New Last Step in Alignment Service

CodeLink® directly “links” the vehicle OBD-II to the aligner to reset steering system sensors, as required by the manufacturer.

Steering system reset typically involves resetting the steering angle sensor, but on some vehicles, torque angle, yaw rate and other steering-related sensors are also reset. CodeLink® handles them all with a single, integrated procedure.



Which OEMs require resets?

Acura	Dodge	Jeep	Nissan
Audi	Fiat	Kia	Saturn
BMW	Ford	Lexus	Scion
Buick	GMC	Lincoln	Subaru
Cadillac	Honda	Mazda	Toyota
Chevrolet	Hyundai	MINI	Volkswagen
Chrysler	Infiniti	Mitsubishi	Volvo



CodeLink® with XF2 Pod Kit* 20-2785-1

Data link from WinAlign® to the vehicle OBD-II (J1962) connector. Order this kit if you want wireless capability and do not currently own an XF2 Pod Kit. Includes CodeLink® device, XF2 Pod Kit, and J1962 cable. Also includes a burndy cable that may be used to connect the CodeLink® device to the alignment console.



CodeLink® without XF2 Pod Kit* 20-2813-1

Data link from WinAlign® to the vehicle OBD-II (J1962) connector. Order this kit if you currently own an XF2 Pod Kit or you do not want wireless capability. Includes CodeLink® device and J1962 cable. Also includes a burndy cable that may be used to connect the CodeLink® device to the alignment console.



BMW 20-Pin Cable 20-2333-1

CodeLink® connection cable required for 2001 and older BMW models with Dynamic Stability Control (DSC).

NEW

Safety System Alignment® equipment



Vehicles with Advanced Driver Assistance Systems (ADAS) often require resets after an alignment. Special equipment required for resetting vehicle safety systems is shown below.

Nissan/Infiniti - Intelligent Cruise Control (ICC)

Nissan Radar Kit – 20-3336-1



15-60-1
Double-ended laser aiming tool



191-36-1-011
Rear stand



191-37-1
Reflective fixture



20-3339-1
Self-centering wheel adaptor with tire clamp and adaptor for mounting TD target

Chrysler/Dodge/Jeep - Adaptive Cruise Control (ACC)



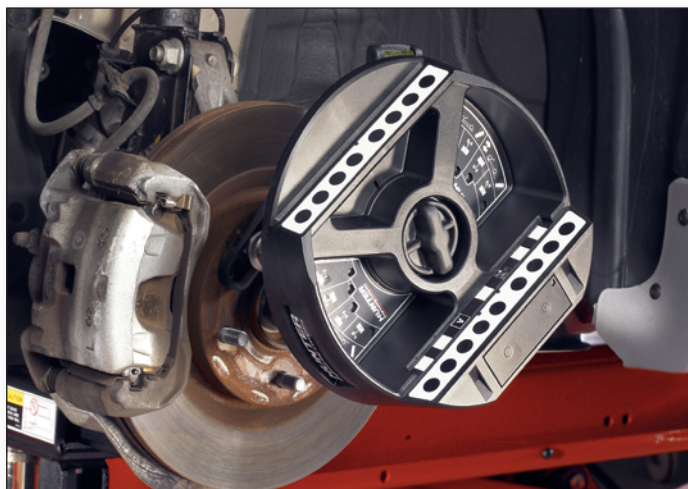
Chrysler Level Tool Kit 20-3326-1

Includes adaptors to accommodate either early- or late-model vehicles.

Wheel-off adjustment kits

Make fast, accurate alignment adjustments... with the wheel removed!
 Wheel-Off Adjustment Kits allow the installation of alignment targets or sensors on hubs to ease adjustments with the wheel out of the way.

- ✓ Creates easy access to alignment points
- ✓ Applicable on more than 30% of vehicles in production
- ✓ Kits cover all Hunter target and sensor designs



TD Target Wheel-Off Adjustment Kit – 20-2664-1

Kit includes:

- 20-1978-1** Wheel-off adaptor kit
- 20-2577-1** Self-centering adaptors for TD targets



Kit [20-1979-1]
includes two adaptors

Wheel-Off Adjustment Kit – 20-1979-1

Magnetic adaptors attach to the rotor once the wheel is removed.
 Requires WinAlign software version 9.0 or greater and [20-1978-1] Wheel-Off Adjustment Kit.



Kit [20-1978-1]
includes two adaptors

Wheel-Off Adaptor Kit – 20-1978-1

Adaptors mount directly to the hub bolts once the wheel is removed.
 Requires WinAlign® software version 9.0 or greater.



Kit [20-2577-1]
includes two adaptors

Self-Centering Adaptors for TD Targets – 20-2577-1

Adaptors required to perform wheel-off adjustments using TD Targets.
 Requires [20-1978-1] Wheel-Off Adjustment Kit.

20-2513-1 Four Adaptor Kit

QuickGrip® adaptor accessories

Medium-Duty Truck Spacer Kit 20-2621-1

This kit contains 4 spacers for medium-duty trucks. These spacers may be used with kit [20-2640-1].



Complete Medium-Duty Truck Kit – 20-2638-1

Contains [20-2621-1 and 20-2640-1] Medium-Duty Truck Tire Hook Kit. Set of 8 two-position adjustable black tire hooks.

Adjustable Tire Hook Kit

Covers clamping range of 20" to 36" tires (outside diameter).

20-2521-1 8 hooks to cover both axles.

20-2639-1 4 hooks to handle very limited clearance applications encountered on the front axles of modified and some European model vehicles.



Protective Ring Replacement Kit 20-2563-1

Attaches to adaptor base to protect rims.

Standard with HawkEye Elite® sensors.

Includes four rings



Replacement Tire Hooks

216-102-1 Single **black** hook

216-94-1 Single **red** hook

216-95-1 Single **blue** hook

216-110-1 Single **gray** hook



Roll-Around Storage Cart Kit (2 carts) – 20-3216-1

Convenient storage and access to adaptors and other accessories.



Inflation Station – 20-3218-1

Provides tire pressure inflation in the inspection lane. Results are recorded on printouts. Requires **20-3216-1** Storage Carts.

20-3251-1 115V to 12V AC Transformer kit



Storage Bracket Kit – 20-2528-1

Provides storage for adaptors on console, lift, HawkEye Elite® sensor column, or Roll-Around Storage Cart Kit [11-1548-2].

Standard with HawkEye Elite® sensors.



Kit 20-2528-1 includes four brackets



Ride height measurement

Live Ride Height Measurement and Adjustment System for HE421, HS421, HS401 and DSP600 Sensors

Ride Height can change over time as a vehicle ages. These changes in ride height can prevent proper alignment.

Hunter Live Ride Height Adjustment allows the technician to easily measure, adjust, jounce and confirm ride height

- ✓ Accurately adjust ride height in just one trip around the car
- ✓ Make ride height adjustments in half the time
- ✓ Integrate with WinAlign Tuner™ software to better service modified vehicles
- ✓ Use the Suspension Body Dimension Audit to determine alignability or need for collision repairs



Suspension Body Dimension Audit Option

The patented Suspension Body Dimension Audit (SBDA) option provides a quick audit to determine if the vehicle is alignable and identifies the potential need for body shop procedures by measuring ride height, body angle, body wheel offset, body wheel setback and body roll.

Requires [20-2050-1] Live Ride Height Measurement Kit and WinAlign® software version 9.0 or greater.

Live Ride Height Measurement Kit – 20-2050-1

Includes four targets used for measuring ride height.

Requires a WA Series or Series 811 console with WinAlign® software version 9.0 or greater and HE421, HS401 or DSP600 sensors.

Live Ride Height Adhesive Strips Kit (100 pcs.) 20-2112-1

For use with HS401 and DSP600 Live Ride Height Targets.

Software upgrades & services

The below features are standard on WA400 and WA200 consoles.

NEW TD Elite Key - 20-2642-1

Enables HawkEye Elite® sensors on consoles with WinAlign® 12.1 or higher.

WinAlign® Plus Kit - 20-2005-1

Provides PHOTO/VIDEO on DVD and WinAlign Tuner™ for new or existing WA300, WA100 and 811 consoles with WinAlign® 8.1 or higher. Enables HawkEye Elite® sensors on consoles with WinAlign® 12.1 or higher.

Digital-PHOTO – 20-1970-1

Provides digital inspection and adjustment photos for new or existing WA100 or 811 consoles with WinAlign® 8.X or higher. More than 4,000 vehicle-specific digital photos improve productivity by quickly identifying adjustment and inspection points.

Combination Digital-PHOTO/VIDEO – 20-1971-1

Provides digital inspection and adjustment photos for new or existing WA100 or 811 consoles with WinAlign® 8.X or higher. More than 400 live videos cover vehicle adjustments, inspection of components, use of special tools, installation of after-market correction kits and equipment operation for over 90% of cars and light trucks sold in the U.S.

Console accessories & system upgrades



Bar Code Reader Kit – 20-2900-1
For use with WA370/470, WA380/480
Includes a 2D Bar Code Reader.



Bar Code Reader Storage Tray 20-2389-1
For use with WA330/430, WA340/440
Provides a storage tray for a bar code reader cradle and an alternative mounting for the bar code reader itself.
Bar Code Reader not included



Bar Code Reader Kit – 20-2538-1
For use with WA330/430, WA340/440
Includes a 2D Bar Code Reader and shelf.



Convex Mirror 213-47-2



Brake Pedal Depressor WA15-S



Steering Wheel Holder 28-75-1



Equipment Cover – 69-1025-2

For WA380/480 large mobile cabinets with conventional passenger-car sensors/targets or HD truck cabinets.

Equipment Cover – 69-1187-2

For WA370/470 small mobile cabinets without hangers for sensors or targets.

Self-centering wheel adaptors & accessories

For HS421, HS401, DSP700, DSP600 and DSP500 Wheel Alignment Sensors
Extended range fits 10" to 24.5" (254 mm to 622 mm) rims

Dual-Purpose Sensor and Adaptor Mounting Kit – 20-2375-1

Set of four brackets that may be mounted to HS401 columns, alignment consoles or in a horizontal position for use on RX lifts. The brackets will hold self-centering wheel adaptors and sensors/targets (not suitable for cordless sensors).

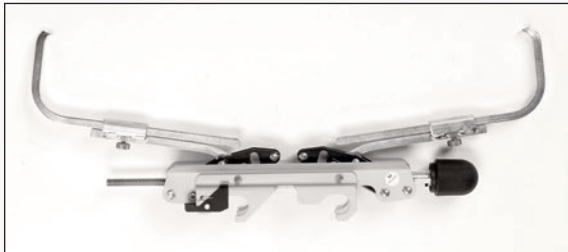
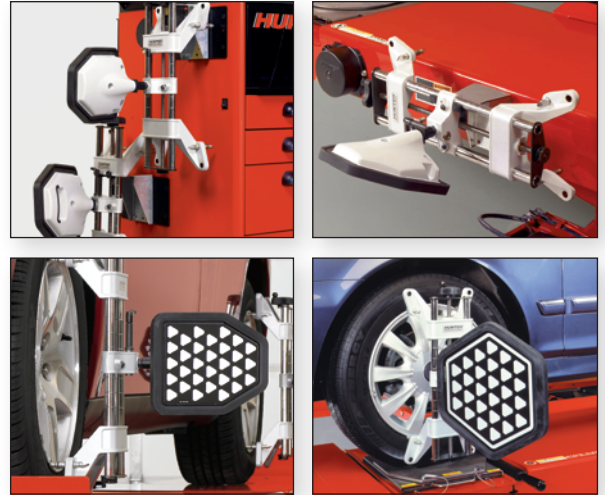
Compatible with [175-321-1 and 175-325-1] Self-Centering Adaptors.

Self-Centering Wheel Adaptor – 175-325-1

Wheel adaptor for DSP600 Hexagonal or HS401 High-Definition Alignment Targets

Self-Centering Wheel Adaptor – 175-321-1

Wheel adaptor for DSP700 and DSP500 Alignment Sensors



Tire Clamp Adaptor – 20-1789-1

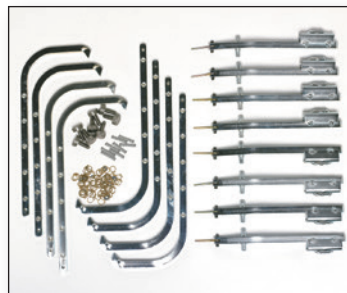
Clamps wheel adaptors on tires with an outside dimension of 21" (533 mm) to 40" (1016 mm). Ideal for rims without rim lips or when space between tire and rim is limited. Grips onto tire treads and protects alloy wheels from damage. Required for use with PAX System Wheels.

Compatible with [175-321-1 and 175-325-1] Self-Centering Adaptors.



Tire Clamp Adaptor – 20-1558-1

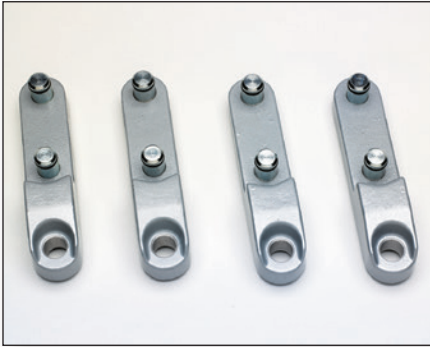
Compatible with [175-200-1, 175-285-1, 175-304-1 and 175-305-1] Self-Centering Adaptors. Grips tread of tires 21" to 40" outside diameter.



Tire Clamp Adaptor Upgrade Kit 20-1559-1

Replaces the current tire hooks on kit 20-1108-1, increasing maximum tire range from 28" to 40".

Compatible with [175-200-1, 175-285-1, 175-304-1 and 175-305-1] Self-Centering Adaptors.



Wheel Adaptor Extensions (16 pcs.) – 20-1792-1

Increase maximum rim range of self-centering adaptors from 24.5" (622mm) to 28" (711mm).

Compatible with [175-321-1 and 175-325-1] Self-Centering Adaptors.

Contains 16 pieces (four for each adaptor)



20-1097-1	Wheel Adaptor Extensions	Increases maximum wheel diameter on self-centering adaptors by 2 1/2 inches. Compatible with [175-200-1, 175-285-1, 175-304-1 and 175-305-1] Self-Centering Adaptors.
20-551-1	Spade Sleeve Kit	Includes eight Rim Stud Sleeves [106-70-2] and eight Storage Plug Assemblies (one kit covers two adaptors).
20-1688-1	Additional Rim Stud Retainers	For 16" - 20" wheel adaptors. Includes eight rim stud retainers (one kit covers two adaptors).
20-1578-1	Mag Wheel Short Kit	Includes four Mag Assembly Adaptors [175-63-3] (one kit covers one adaptor).
20-550-1	Rubber Pad Sleeve Kit	Includes four each of the following: [175-37-3] Mag Assembly Adaptor and [175-63-3] Mag Assembly Adaptor (one kit covers two adaptors).

OE-specific applications



BMW Quick Clamp Adaptor – 175-348-1

Hunter Quick Clamp Adaptor approved by BMW. BMW special adaptors with large tire hooks and 120 mm pins. For use with all HawkEye® HS401 and DSP sensors.

175-214-1 Replacement only for older installations



Mercedes-Benz Clamp Adaptor – 175-349-1

Hunter Quick Clamp Adaptor approved by Mercedes-Benz. Mercedes-Benz special adaptors with large tire hooks and 100 mm pins. For use with all HawkEye® HS401 and DSP sensors.

175-215-1 Replacement only for older installations



BMW 120 mm Pin Kit 20-1867-1

120 mm pins are standard on [175-348-1] Quick Clamp Adaptors. May also be used with [175-214-1] Quick Clamp Adaptors for some specialty wheels with deeper offsets. (one kit covers four adaptors).

Mercedes-Benz 100 mm Pin Kit – 20-1329-1

Use with Mercedes-Benz Clamp Adaptors [175-349-1 and 175-215-1] (one kit covers one adaptor).

Long Hooks for Special Adaptors – 20-1857-1

Long hooks for BMW and Mercedes-Benz Clamp Adaptors. May be used with [175-214-1 and 175-215-1] Clamp Adaptors. Standard on [175-348-1] BMW Quick Clamp Adaptors.

Self-centering wheel adaptors & accessories cont.



Rim Stud Retainer 134-133-1

Rim Stud Retainer for mounting adaptors. Compatible with all current production slip-on spade sleeves. One included.

Standard and compatible with [175-321-1 and 175-325-1] Self-Centering Adaptors. Kit includes eight retainers covering two adaptors.



Spade Sleeve Kit – 20-1522-1

Kit includes eight Rim Guard Tire Sleeves [106-118-2], covering two adaptors.



Rim Stud Extension Kit – 20-823-1

Kit includes eight Rim Stud Extensions [134-81-1], covering two adaptors.



Sensor Shaft Extension 20-2916-1

Kit includes two sensor shaft extensions.



Spade Sleeve Kit – 20-831-1

Kit includes eight Rim Stud Sleeves [106-70-2], covering two adaptors.

Standard with [175-34-1 and 175-325-1] Self-Centering Adaptors.



Adaptor Upgrade Kit – 20-1842-1

For HS401, HS400, DSP600 and DSP400 Sensors

For mounting to sensor columns. Includes four [175-325-1] Self-Centering Adaptors (clamping range 10" - 24.5"), four storage brackets and mounting hardware.



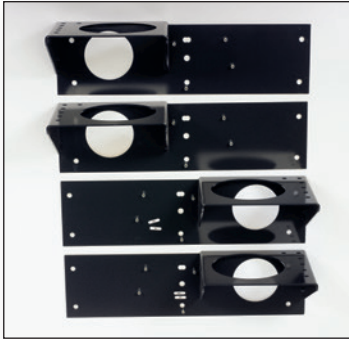
Adaptor Upgrade Kit – 20-1841-1

For HS401, HS400, DSP600 and DSP400 Sensors

For mounting to aligner cabinet or wall. Includes four [175-325-1] Self-Centering Adaptors (clamping range 10" - 24.5"), four storage brackets and [20-1822-1] Instrument Support Adaptor Plate Kit.

20-1770-1	Instrument Support Kit	Holds self-centering wheel adaptors and sensors/targets (not suitable for cordless sensors). Mounts to DSP600 or DSP400 columns. Compatible with [175-321-1 and 175-325-1] Self-Centering Adaptors. Set of four.
20-1762-1	Instrument Support Adaptor Plate Kit	Allow DSP500 hangers to be mounted to alignment cabinets that only have mounting holes for older, horseshoe-style sensor supports. Does not include DSP500 Sensor hangers. Set of four.
20-1427-1	Instrument Support Kit	Holds self-centering wheel adaptors and sensors/targets (not suitable for cordless sensors). Mount to two-post and four-post Hunter lift rack columns. Compatible with [175-200-1, 175-285-1, 175-304-1 and 175-305-1] Self-Centering Adaptors. Set of four.
20-1822-1	Instrument Support Adaptor Plate Kit	Allow [20-1770-1] Bracket Kit to be mounted to walls or alignment cabinets. Does not include [20-1770-1] Kit. Set of four.
20-1446-1	Safety Hook Assembly	Set of four, compatible with [39-22-1, 39-25-1, and 39-44-1] safety cables. Includes four Safety Cable Hook Assemblies [216-58-1].
20-2193-1	Instrument Support Kit	Allow HS401 hangers to be mounted to walls or alignment cabinets. Does not include sensor hangers. Set of four.

Sensor accessories



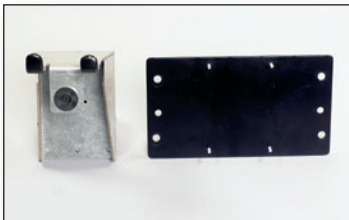
Instrument Support Kit 20-1899-1

For use with Mercedes-Benz and BMW Quick Clamp Adaptors and DSP500 Sensors.



Instrument Support Kit 20-1900-1

For use with Mercedes-Benz and BMW Quick Clamp Adaptors and HawkEye® HS401 and DSP600 Sensors.



Instrument Support Plate Kit 20-2187-1

Set of four brackets mount to HS401 columns. The brackets will hold

self-centering wheel adaptors and sensors/targets (not suitable for cordless sensors).

Compatible with [175-321-1 and 175-325-1] Self-Centering Adaptors.



Five-Position Battery Charger 20-1832-1

Provides a charging station for up to five DSP500 Sensor batteries.



Six-Position Battery Charger 20-2760-1

Provides a charging station for up to six DSP700 Sensor batteries.

20-1864-1	AC Conversion Kit	Allows the Five Position Battery Charger [20-1832-1] to be used as a free-standing charger without using the aligner power supply.
20-1488-1	Auxiliary DSP Sensor Charging Station	Provides a second charging station where cordless sensors and HS401, DSP600 or DSP400 Sensors are being used with the same console.
194-18-2	Cordless Sensor Battery	For DSP200 and DSP300 Sensors.
194-23-2	Cordless Sensor Battery	For DSP500 Sensors, [30-418-1] Cordless Plus Remote Indicator and [30-421-1] Icon Remote Cordless Remote Indicator.

Alignment tools, kits & accessories

Alignment Tool Kit – 20-2198-3

This kit contains many of the more commonly used correction tools.

Kit includes:

A	RP5-88-343	Full contact/dual angle rear shim tab cutting tool works equally well on both the original design or the new SYSTEM 2000 universal design
B	RP5-88-1110	3/8-in. drive bolt/nut remover
C	RP5-88-7095	Tie rod adjuster for compact vehicles <i>Not shown</i>
D	RP5-88-7096	Tie rod adjuster for full-size vehicles <i>Not shown</i>
E	RP5-88-7097	Lt. truck tie rod tool for 1/2-in. drive <i>Not shown</i>
F	RP5-88-7098	Toe adjuster for Ford Super-Duty <i>Not shown</i>
G	RP5-88-7099	Tie rod adjusting tool
H	RP5-88-7101	Tie rod adjuster for Chrysler "LH" models
I	RP5-88-7102	Tie rod stabilizer for Chrysler "LH" models
J	RP5-88-7103	Tie rod wrench for Chrysler "LH"
K	RP5-88-7201	Sleeve adjusting tool
L	RP5-88-7203	Sleeve outer wrench for Chrysler "LH"
M	RP5-88-7301	Universal Inner Tie Rod Socket <i>Not shown</i>
N	RP5-88-7491	GM upper control arm knock out tool
O	RP5-88-8923	GM "W" body rear toe adjuster
P	RP5-88-8925	Camaro/Firebird (1994 & newer) caster/camber adjuster <i>Not shown</i>
Q	RP5-88-8927	Camber/caster adjusting tool <i>Not shown</i>
R	RP5-88-9200	Taurus/Sable sedan rear toe adjuster
S	RP5-88-9480	Magnetic camber change gauge



A



B



G



H



I



J



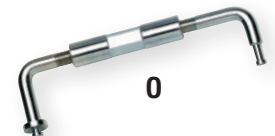
K



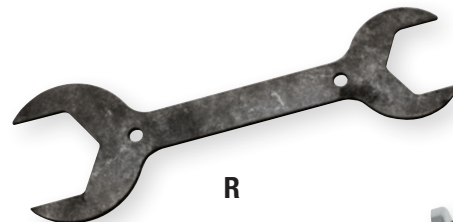
L



N



O



R



S

Shim / Bushing / CAM Assortment



Shim/Bushing/CAM Assortment – 20-1575-3

This kit contains many of the more commonly used shim, bushing and CAM correction kits.

Kit includes:

RP5-42-778	1997-2003 F150 DEG CAM BOLT 2-1/2 (2 EA.)	RP5-44-5008	4WD BUSHING (1 EA.)
RP5-42-951	CAST/CAMB BUSHING 1/4 (1 EA.)	RP5-44-5009	4WD BUSHING (1 EA.)
RP5-42-952	CAST/CAMB BUSHING 1/2 (1 EA.)	RP5-44-5010	4WD BUSHING (1 EA.)
RP5-42-953	CAST/CAMB BUSHING 3/4 (1 EA.)	RP5-44-768	SHIM EXPLORER/RANGER (1 EA.)
RP5-42-954	CAST/CAMB BUSHING 1 (1 EA.)	RP5-44-786	SHIM 2003 EXPEDITION (1 EA.)
RP5-42-955	CAST/CAMB BUSHING 1-1/4 (1 EA.)	RP5-44-789	SHIM 2004 F150 (1 EA.)
RP5-42-956	CAST/CAMB BUSHING 1-1/2 (1 EA.)	RP5-44-792	SHIM 2003 DODGE 1/2-TN. TRUCKS (1 EA.)
RP5-42-957	CAST/CAMB BUSHING 1-3/4 (1 EA.)	RP5-41-147	KIT-MAGNA CAM 12MM (1 EA.)
RP5-42-958	CAST/CAMB BUSHING 2 (1 EA.)	RP5-41-157	HEAVY-DUTY 9/16-IN. MAGNA CAM (1 EA.)
RP5-42-959	CAST/CAMB BUSHING 2-1/4 (1 EA.)	RP5-41-158	KIT-MAGNA CAM 14MM (1 EA.)
RP5-42-960	CAST/CAMB BUSHING 2-1/2 (1 EA.)	RP5-41-160	KIT-MAGNA CAM 16MM (1 EA.)
RP5-42-961	CAST/CAMB BUSHING 2-3/4 (1 EA.)	RP5-46-2100	UNIVERSAL BLUE SHIM [0 – 1-1/2] (2 EA.)
RP5-44-5001	4WD BUSHING (1 EA.)	RP5-46-2200	UNIVERSAL WHITE SHIM [0 – 1-1/2] (2 EA.)
RP5-44-5002	4WD BUSHING (1 EA.)	RP5-46-2300	UNIVERSAL GRAY SHIM [0 – 1-1/2] (2 EA.)
RP5-44-5003	4WD BUSHING (1 EA.)	RP5-46-2400	UNIVERSAL BURG. SHIM [0 – 1-1/2] (2 EA.)
RP5-44-5004	4WD BUSHING (1 EA.)	RP5-46-1121	SHIM-1/4 DEGREE GREEN (1 EA.)
RP5-44-5005	4WD BUSHING (1 EA.)	RP5-46-1122	SHIM-1/2 DEGREE GREEN (1 EA.)
RP5-44-5006	4WD BUSHING (1 EA.)	RP5-46-1123	SHIM-3/4 DEGREE GREEN (1 EA.)
RP5-44-5007	4WD BUSHING (1 EA.)	RP5-46-1124	SHIM-1 DEGREE GREEN (1 EA.)

Quick Check[®]

HUNTER

The inspection process that locates repair orders in under three minutes



CodeLink[®]* – 20-2813-1

Retrieves emission codes. Wirelessly transfers important vehicle information to console.



Battery Health* – 20-2781-3

Tests battery to OEM specs. Sends results to console wirelessly in 10 seconds.



Quick Tread[®]*

Drive-over tread depth measurement system



Tire Tread Depth* – 20-2782-1

Quick and easy tire wear check. Conditions transmitted to console automatically.



HunterNet® (HunterNetwork.com) provides front-shop personnel with quick, convenient access to a vast collection of vehicle-specific undercar information to help explain and sell service.

- ✓ Eliminate confusing technical conversations with easy-to-understand videos, animations and images
- ✓ Help your customers make informed decisions
- ✓ Drive repair authorizations to a new level
- ✓ Supplement other counter merchandising tools
- ✓ Make more informed pricing estimates
- ✓ Simplify training of service writers

Hunter Networking Accessories

NEW Wireless Network Kit – 20-3197-1

Connects WA300 consoles to a shop's existing 802.11ac wireless network. Standard on WA500 and WA600 consoles.

Wireless Network Kit – 20-2195-1

Connects WA100 or 811 consoles to a shop's existing 802.11a/b/g wireless network. Standard on WA400 and WA200 consoles.



For ordering information, contact your local Hunter Service Representative.

Complimentary HunterNet® 3-year subscription included with HawkEye Elite® and HawkEye® alignment systems.

Complimentary HunterNet® 1-year subscription included with current-year WinAlign® specification updates.

Subscription valid for single-user only. Additional subscriptions required for multiple, simultaneous access.



WinAlign Tuner™ Kit – 20-2004-1

WinAlign Tuner™ software, hardware and procedures enable your shop to align modified vehicles and increase your shop's profitability.

WinAlign Tuner™ software is an optional feature of WinAlign® software. Additional hardware is required.

WinAlign Tuner™ is standard with WA600, WA400, WA200 and 811 Plus consoles.

WinAlign Tuner™ features include:

- ✓ Enhanced Tools and Kits
- ✓ Integrated Bump Steer Measurement System
- ✓ Electronic Vehicle Ride Height Measurement

Bump Steer Winch Kit – 20-2011-1

Bump steer winch and laser scale enables the technician to collect bump steer measurements.

Requires WinAlign® software version 8.1 or higher.



WinAlign® Plus Kit – 20-2005-1

Provides PHOTO/VIDEO on DVD and WinAlign Tuner™ for new or existing WA300, WA100 and 811 consoles with WinAlign® 8.1 or higher.

These features are standard on WA400 and WA200 consoles.

Remote Indicators

Hunter Remote Indicators speed alignment service

Remote Indicators provide the operator complete control of the alignment system while making adjustments to the vehicle.

- ✓ Displays measurements
- ✓ Functions as a remote control
- ✓ Eliminates need for a separate remote control under the vehicle
- ✓ Allows the technician to perform rolling compensation when the console is out of view



Cordless Plus Remote Indicator easily records tire and suspension measurements – 20-2880-1

Hunter's Plus Remote Indicator refines your alignment service by measuring tire temperature and frame angle and letting you enter in values for tire pressure, tread depth and ride height without repeated trips back to the console.

Includes:

20-2056-1	Hanger kit with remote hanger recharge
38-944-3	30-foot cable
27-13-2	Tire temperature probe

For use with WA Series and Series 811 aligners using WinAlign® alignment software version 9.0 and greater.



Icon Remote Indicator – 20-2881-1

Icon Remote Indicator is compatible with WA Series, Series 111/211/311/411/511/611/811 and PA100 aligners.

Includes:

20-2055-1	Hanger kit
38-944-3	30-foot cable

For use with WinAlign® alignment software version 1.5.1 and greater.



Cordless Icon Remote Indicator – 20-2882-1

Cordless Icon Remote Indicator is compatible with WA Series, Series 811, Series 611 with USB support and PA100 aligners.

Includes:

20-2056-1	Hanger kit with remote hanger recharge
38-944-3	30-foot cable

For use with WinAlign® alignment software version 1.5.1 and greater.

For detailed information on models, cabinets and accessories, contact your Hunter representative.

WinAlign, CodeLink, HawkEye Elite, HawkEye, QuickGrip, Quick Check, and HunterNet are registered trademarks of Hunter Engineering Company.

1017SAP

Copyright © 2017, Hunter Engineering Company



HUNTER
Engineering Company

www.hunter.com

Form 5414-T, 10/17
Supersedes form 5414-T, 06/17