

WinAlign® HD Alignment Systems

Fast and accurate wheel alignment for multi-axle trucks

NEW



New DSP760T alignment sensors

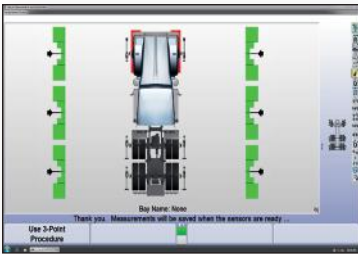
Hunter's new DSP760T heavy-duty alignment sensors reduce setup time and provide accurate alignment readings.



PATENTED

Rolling Compensation

- ✓ No jacking required
- ✓ Compensate all sensors at once
- ✓ Short roll comp



PATENT PENDING

Six Sensors Live

- ✓ Three axles live
- ✓ See all measurements at once
- ✓ Diagnose tire wear conditions
- ✓ Reduce setup time through minimal sensor movement



PATENTED

Heavy-Duty Quick Grip Clamp

- ✓ Fast installation
- ✓ No metal-to-metal contact

OPTIONAL



STANDARD

Self-Centering Adaptors

- ✓ High versatility for trucks and buses with low-hanging bumpers or air dams
- ✓ Fits wheels 15 to 28 inches in diameter



PATENT PENDING

Trailer Alignment

- ✓ Align without unhooking from tractor
- ✓ Align using optional kingpin adaptor without tractor
- ✓ Accurate to 600 inches



PATENT PENDING

Truck Pusher

- ✓ Easily move vehicle for rolling comp
- ✓ Rechargeable battery
- ✓ Doubles as a wheel chock



PATENTED

Fully Integrated Alignment

- ✓ Auto-locking turnplates
- ✓ Built-in turnplate bridges for rolling comp

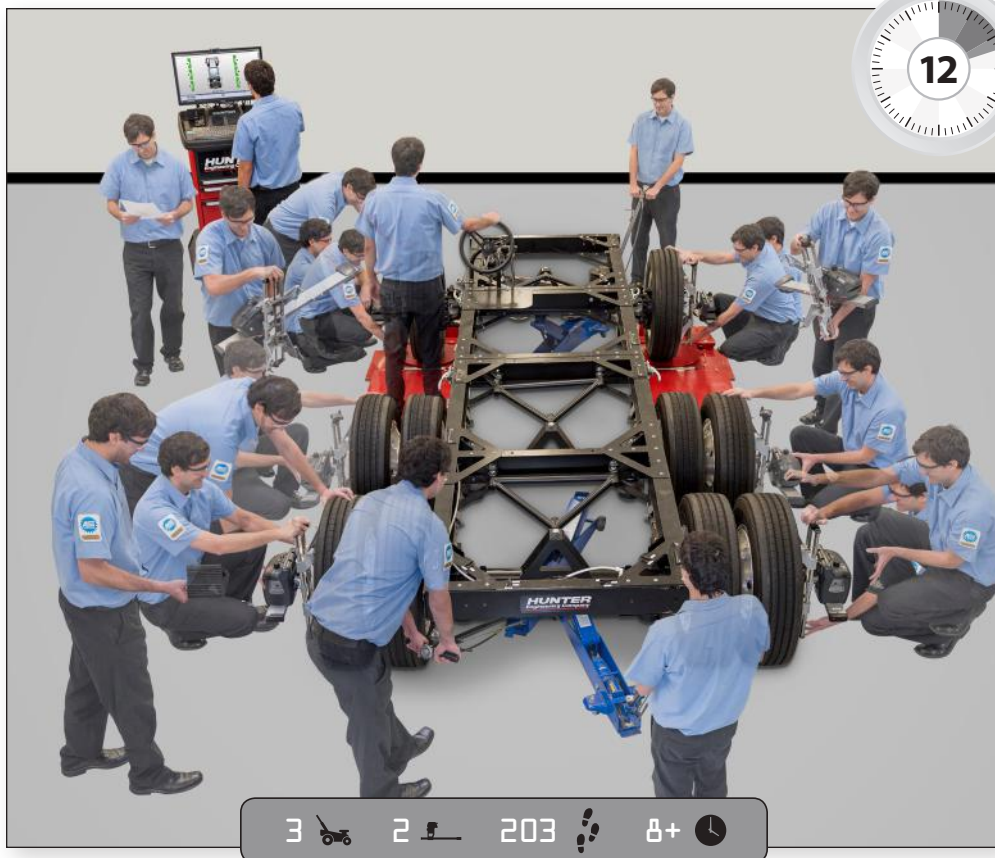


STANDARD

Cordless Operation

- ✓ No cumbersome cables
- ✓ Hot-swappable batteries

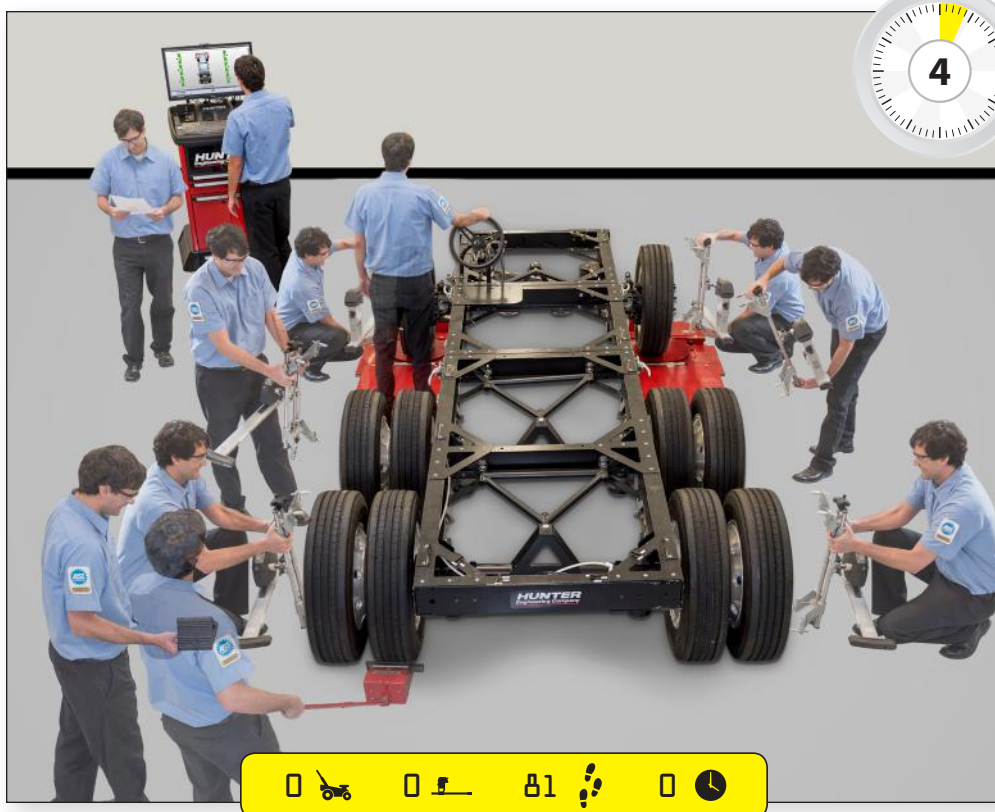
Previous setups used valuable shop time...



Traditional procedures

- ✓ Position vehicle
- ✓ Select vehicle type
- ✓ Jack front axle
- ✓ Mount front sensors
- ✓ Compensate each sensor
- ✓ Pull turnplate pins
- ✓ Lower front axle
- ✓ Jack rear axle
- ✓ Mount rear sensors
- ✓ Compensate each sensor
- ✓ Lower rear axle
- ✓ Steer caster
- ✓ Jack middle axle
- ✓ Move fronts to middle
- ✓ Compensate each sensor
- ✓ Lower middle axle
- ✓ Print results

12:00-15:00 Total



Standard procedure

- ✓ Position vehicle
- ✓ Select vehicle
- ✓ Mount sensors
- ✓ Roll forward to compensate
- ✓ Steer caster
- ✓ Print results

4:00 Total

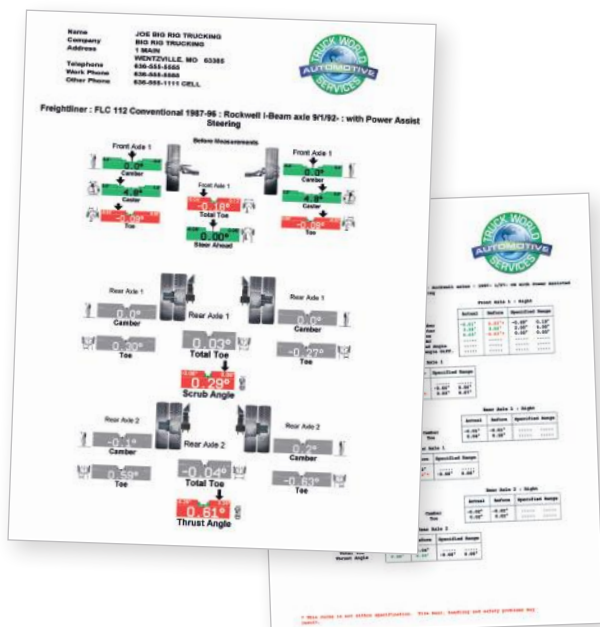
...Today, present your results in just 3 minutes!



New procedure

- ✓ Position vehicle
- ✓ Select vehicle
- ✓ Mount sensors
- ✓ Roll forward to compensate
- ✓ Steer caster
- ✓ Print results

3:00 Total



ACTIVITY TRACKER



axles jacked to compensate



sensor movements



total walking steps

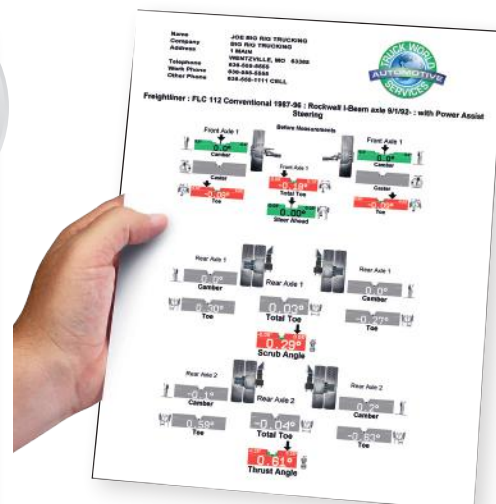
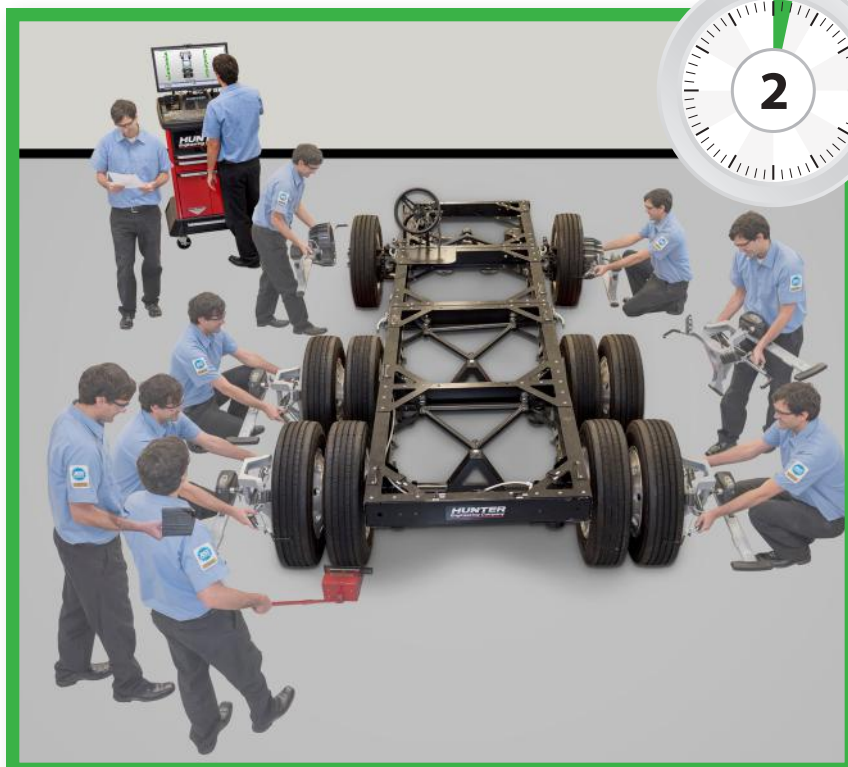


additional minutes required before adjustment

Fast printouts in 3 minutes!

Use detailed before and after printouts featuring your company's logo to sell more work.

Check tire wear angles in just 2 minutes!



Use detailed printouts featuring your company's logo to sell more work

- ✓ Get measurements on three axles
- ✓ Toe and camber on front axle
- ✓ Thrust and scrub on rear axles

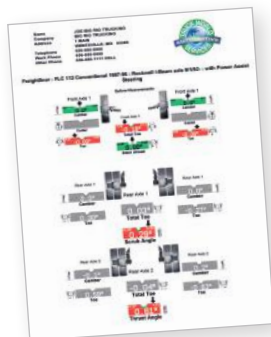
Step-by-step procedure for HD alignment checks



1. Mount six sensors



2. Roll vehicle forward



3. Retrieve the printout



4. Sell the service

The Quick Check Heavy-Duty Spec benefits shops performing quick alignment checks:

- ✓ Based on TMC documentation
- ✓ Eliminates the axle code requirement
- ✓ Saves approximately two minutes per truck
- ✓ 80% alignment opportunity generates revenue
- ✓ Increase fleet tire life by 20% and reduce fuel consumption by 2%

Accessories



PATENT PENDING

Truck Pusher

Standard with WT600

Hunter's battery operated pusher easily moves the vehicle for accurate rolling compensation. (20-2855-1)

OPTIONAL

Mini self-centering wheel clamps



Allow sensor to be mounted to hub center of front rims (2 required) (175-284-1).



OPTIONAL

Remote indicator

Provides the operator with complete control while making adjustments to the vehicle. (Cordless: 20-2882-1)

Turnplate options

- ✓ Adjustable track width from half-tons to Class 8
- ✓ 10,000 kg (22,000 lbs) per axle
- ✓ Built-in turnplate bridges for rolling comp (excluding Portable)

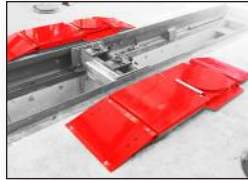


Lock turnplates with a switch or automatically through an FIA-equipped aligner.

OR



Manually slide lever to lock or unlock turnplates.



Surface-Mount

- ✓ Accommodates existing pits

20-3291-1 PowerSlide™ **20-3292-1** SlideLock



Rack-Mount

- ✓ Compatible with RKHD, PT, PE, and PF racks
- ✓ Perform Quick Checks and alignments easier

20-3334-1 PowerSlide™ **20-3333-1** SlideLock



Flush-Mount

- ✓ Level profile reduces tripping hazards
- ✓ Clean installation and smooth approach

20-3294-1 PowerSlide™ **20-3293-1** SlideLock



Portable

- ✓ Multiple bays
- ✓ Mobile alignment service

20-3271-1



OPTIONAL

Trailer gauge

Trailer alignment gauge tool mounts sensors to the trailer kingpin. Trailer axles are adjusted to centerline. (221-738-1)



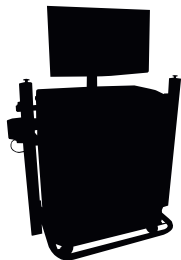
OPTIONAL

Sensor storage options

Sensor storage post (left) or cart (right) provides convenient access and storage for alignment instruments. (Post: 20-2886-1, Cart: 20-2850-1)

When it comes to heavy-duty software, WinAlign® HD is unmatched!

The importance of software...



Ordinary systems simply present alignment readings



WinAlign HD maximizes profit and productivity

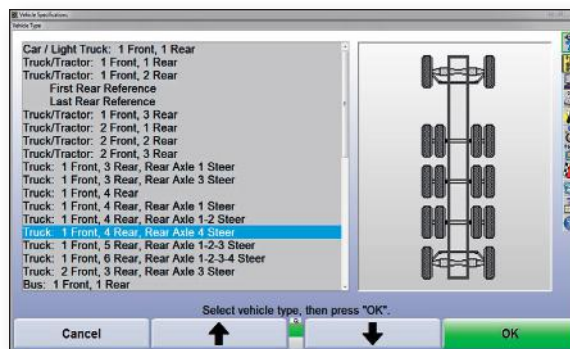
- ▶ **The most extensive** vehicle information database.
- ▶ **Vehicle-specific** procedures guide your technicians with step-by-step instructions.
- ▶ **Patented power tools** complete the work accurately the first time, every time.
- ▶ **WinAlign HD maximizes profit and productivity** in your alignment bay.



PATENTED

ExpressAlign®

Perform every alignment with a streamlined procedure. ExpressAlign analyzes each job and presents the optimal action sequence with the minimum steps required.



60+ Axle configurations possible

WinAlign HD software supports more than 60 customized truck, trailer and bus alignment procedures as well as passenger car and light truck alignment.

Additional power features for light-vehicle work includes:

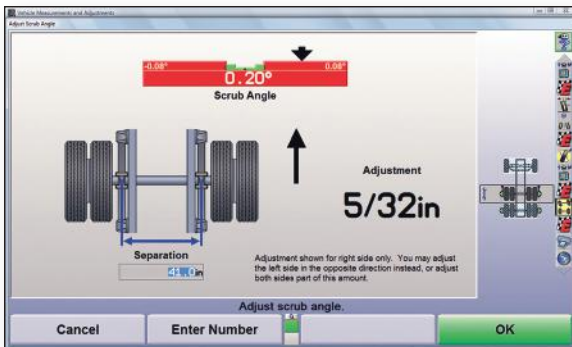
CAMM® feature • Tools and Kits database • Digital photos/videos* • ExpressAlign® procedure • Shim Select® II feature • Work Management features



PATENTED

WinToe®

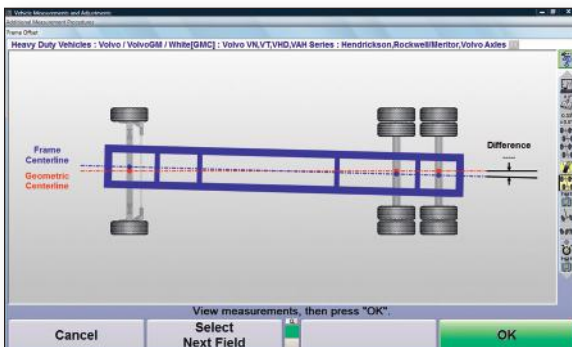
Ensure a straight steering wheel every time without repeated adjustments or using a steering wheel holder. Works with all vehicles on the road today, from cars to Freightliners.



PATENTED

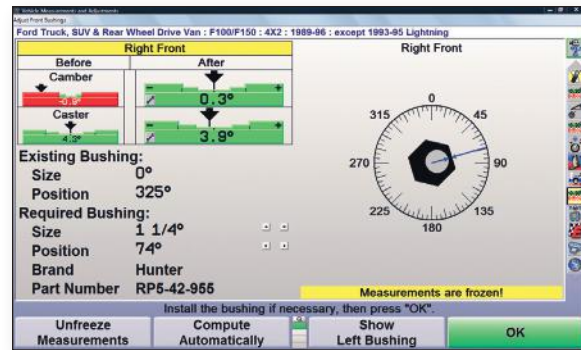
Rear Axle Adjustment Calculations

Cut adjustment times in half for rear axle corrections. Graphics let you get it right on the first try.



Frame Offset Angle Display

Measure frame offset angle and calculate adjustments to frame centerline, if a frame reference alignment is needed.



PATENTED

Automatic Bushing Calculator®

Calculate the proper bushing size and position adjustment without wasting time with a zero bushing. Eases the process of servicing Ford F-150-450's.



Adjustment Videos

Strengthen technician competency and extend profit opportunities with helpful adjustment videos.



Before and after alignment results can be printed in color.

Console configurations

		WinAlign WT600 Premium	WinAlign WT500 Standard
Industry-leading hardware and software	Intel Core i3 Processor 3.70 GHz (or greater)	✓	✓
	4 GB of DDR3 SDRAM Memory	✓	✓
	240 GB SSD hard drive (or greater)	✓	✓
	DVD-RW/CD-RW drive	✓	✓
	Windows® 10 operating system	✓	✓
	Car and light truck software*	✓	✓
	2 years of free VID updates	✓	✓
	2 years of free HunterNet access	✓	✓
	Wireless network module	✓	Optional
	AlignGuide training	✓	Optional
	DSP760T support	✓	Optional
	Rolling compensation	✓	Optional
	Truck Pusher	✓	Optional



Premium



Standard

* Car alignment sensors required.

DSP700T sensor features

	DSP760T	DSP740T
Axles live	3	2
High-speed wireless communication	✓	✓
Pro-Comp® continuous compensation	✓	✓
Rolling compensation option**	✓	✓
Level Reminder® on-screen leveling	✓	✓
Sensor locking mechanism	✓	✓
Interrupted measurement retention	✓	✓
Light-weight construction	✓	✓



DSP760T



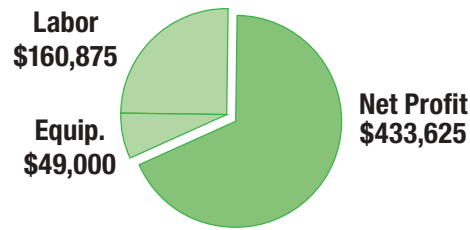
DSP740T

** Requires WT600 console.

Return on investment

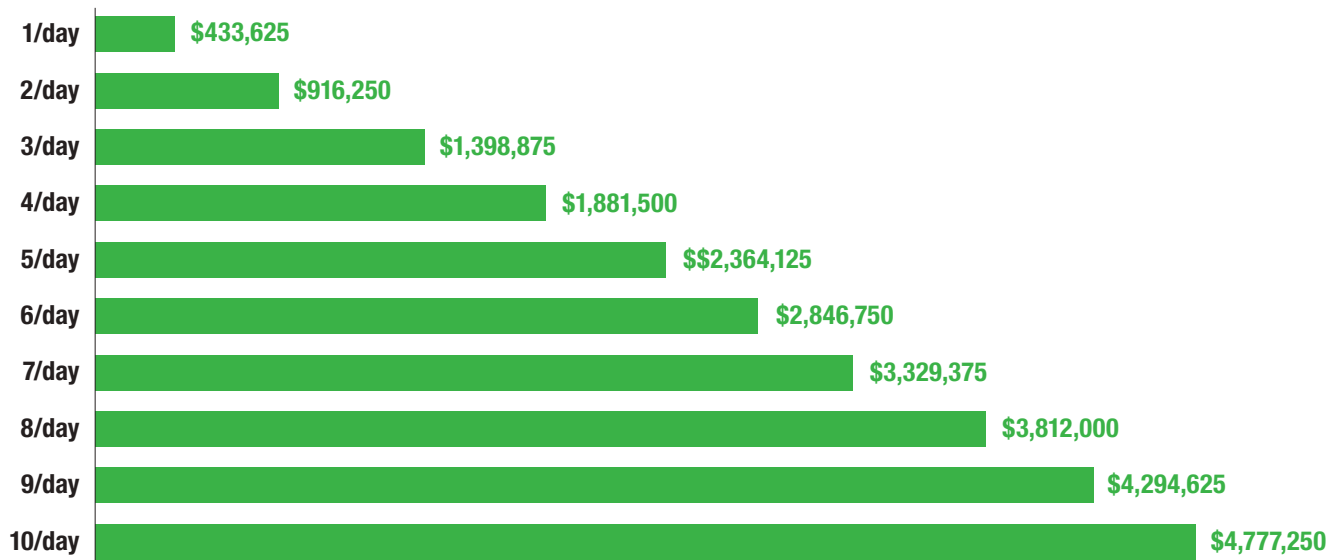
HD wheel alignment profitability

Cash Investment - 1/day



Cash Purchase		Alignments per period			
Work week (days)	5.5	1 Per day	= 24 Per month	= 286 First year	= 2,860 10 year
Alignment RO Total (\$225 per align)	\$225	\$225	\$5,358	\$64,350	\$643,500
Cost of labor & parts	-25%	-\$56	-\$1,340	-\$16,088	-\$160,875
Gross Profit	\$168.75	\$169	\$4,019	\$48,263	\$482,625
Total investment (7 year depreciation)	\$49,000	-\$24	-\$583	-\$7,000	-\$49,000
Net Profit	\$144.26	\$144	\$3,435	\$41,834	\$433,625
Alignments per month to break even	3.5	340 days	14.3 months	1.2 years	
Full Equipment Payback					

Ten-year return on a \$49,000 investment

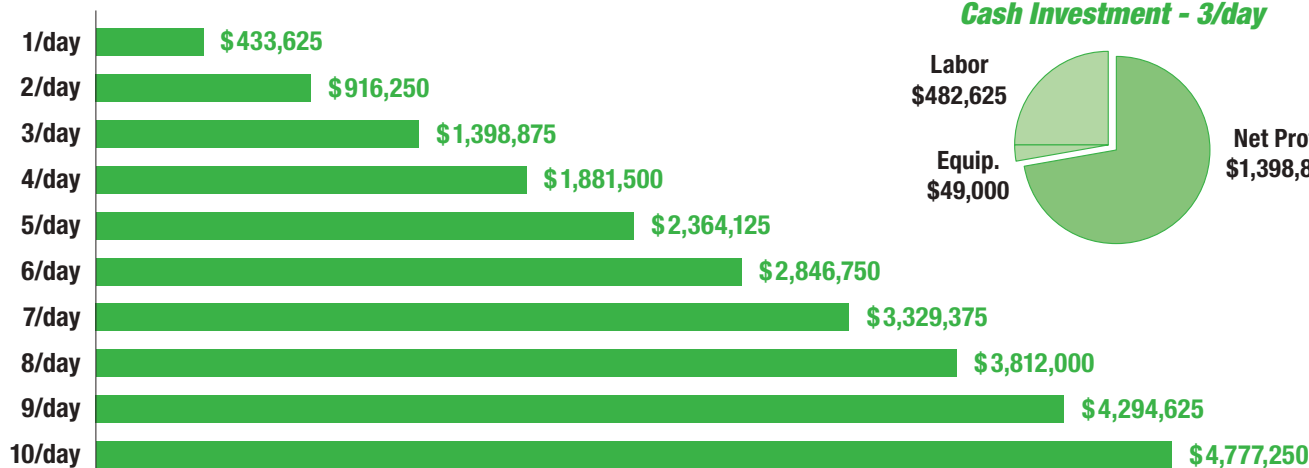


Return on investment

HD Quick Check wheel alignment profitability

Cash Purchase		Alignments per period			
Work week (days)	5.5				
Alignments per day (Core Business)	1				
# Non Alignment Traffic per day	10				
# Trucks Needing Alignment: 70% (Ind. Avg.)	7				
Add'l Alignments Sold: 25% (or more)	+2				
Total Alignments per day:		3	=	71	=
		Per day		Per month	
					858
				First year	=
					8,580
				10 year	
Alignment charge	\$ 225	\$ 675	\$ 16,075	\$ 193,050	\$ 1,930,500
Alignment add'l charges (Ind. Avg.)	\$ 0	\$ 0	\$ 0	\$ 0	\$ 0
Alignment RO Total	\$ 225	\$ 675	\$ 16,075	\$ 193,050	\$ 1,930,500
Cost of labor & parts	-25%	-\$ 169	-\$ 4,019	-\$ 48,263	-\$ 482,625
Gross Profit	\$ 168.75	\$ 506	\$ 12,056	\$ 144,788	\$ 1,447,875
Total investment (7 year depreciation)	\$ 49,000	-\$ 24	-\$ 583	-\$ 7,000	-\$ 49,000
Net Profit	\$ 160.59	\$ 482	\$ 11,473	\$ 137,788	\$ 1,398,875
Alignments per month to break even	3.5	102	4.3	0.4	
Full Equipment Payback		days	months	years	

Ten-year return on a \$49,000 investment



HUNTER
Engineering Company
www.hunter.com