

TCX50 Standard Tire Changer

Conventional tire changer

UPDATED



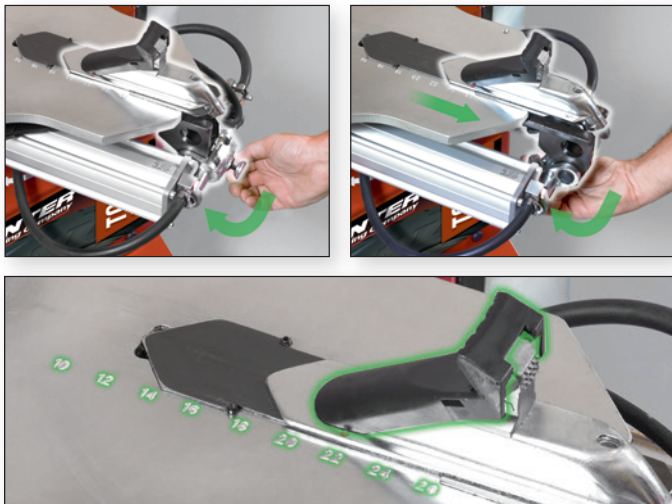
Key features of the TCX50 tire changer

Best in class

- ✓ Heavyweight for less movement when changing tires
- ✓ Long service life
- ✓ Rigid chassis reduces damage risk and operator effort

Easy-to-use adjustable tabletop

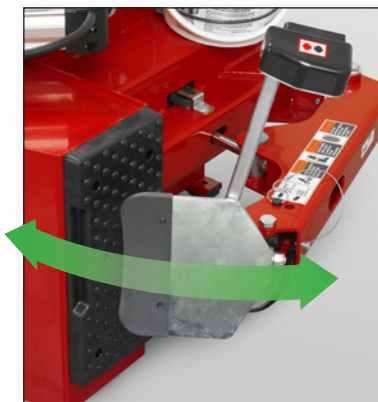
- ✓ Provides 10 to 26 in. clamping range
- ✓ All jaws adjust simultaneously for mistake-free clamping
- ✓ Polished tabletop for easy cleanup
- ✓ Hi-grip jaw covers add mounting torque and protect wheels
- ✓ Diameter marks aid external clamping



STANDARD

PowerOut™ Bead Loosener

- ✓ Most powerful bead breaker in its class
- ✓ Fingertip control eases service of large assemblies
- ✓ Three-way adjustable for best rim fit
- ✓ Shovel protectors standard

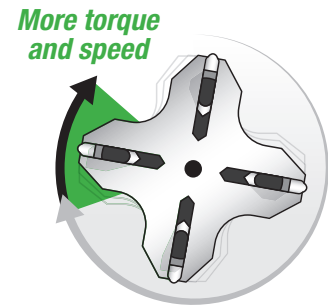
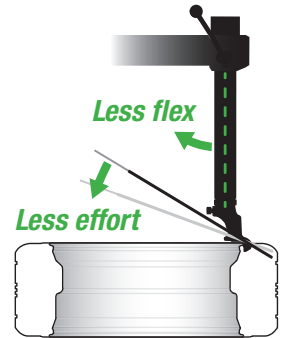
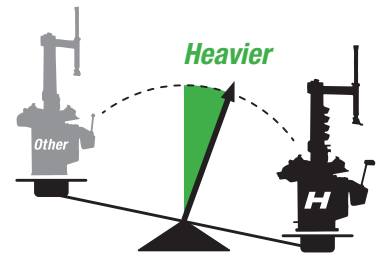


TCX50H shown

Three powerful configurations

Hunter TCX50 tire changers are heavier, more rigid, faster and more powerful than other tire changers in the same class.

	NEW TCX50H	TCX50E	TCX50A
Motor	Electric 220V dedicated	Electric 220V or 110V	Air
Mass	25% heavier	20% heavier	20% heavier
Rigidity	10% less flex and effort	10% less flex and effort	10% less flex and effort
Power	50% more torque	20% more torque	5% more torque
Speed	Two-speed 7 and 17 rpm	Single-speed 10 rpm	Variable-speed 10 rpm max



Popular Accessories



OPTIONAL

Bead Press System 20-2834-1

Aids mounting and demounting with tremendous power and control
(Standard on TCX53)



OPTIONAL

Bead Press Arm 20-2833-1

Aids mounting, demounting and clamping. Hook lifts heavy tires
(Standard on TCX51)

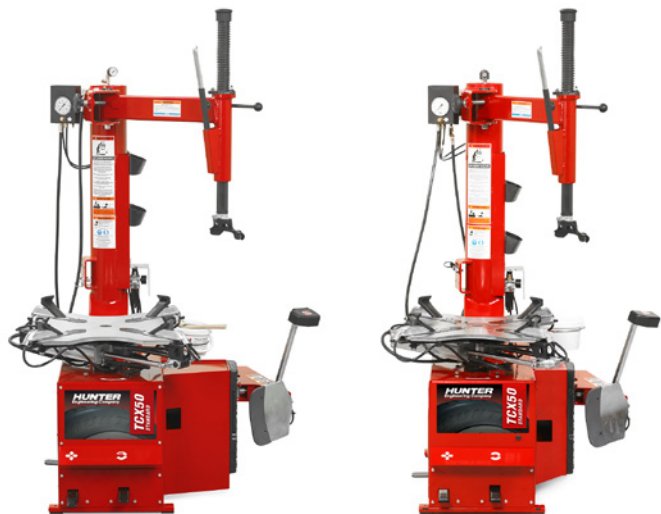


OPTIONAL

Blast Inflater RP11-8-11100403

Direct bursts of compressed air to seat difficult beads.

Specifications*



TCX50H

TCX50E / TCX50A

Electrical requirements

H model	220V, 1 ph, 6A, NEMA L6-20P
E model	110V, 1 ph, 14A, NEMA 5-15 220V, 1 ph, 7A, NEMA L6-20P
A model	—
Air pressure operating range	110 – 145 psi
Air volume of inflation tank	4.75 gallons
Wheel clamping (nominal)	
External (min-max)	10 – 26 in.
Internal (min-max)	12 – 28 in.
Table rotation speed (rpm)	
H model	7 and 17 CW / 7 CCW
E model	10 CW / 10 CCW
A model	10 CW and CCW
Maximum tire diameter	46 in.
Maximum tire width	14 in.
Bead loosener width	16 in.
Noise level	74 dB
Machine weight	
H model	697 lbs.
E and A models	633 lbs.

* Some dimensions, capacities and specifications may vary depending on tire and wheel configurations.

Models

TCX50H 220V electric 2-speed wide-chassis tire changer

TCX50E 110/220V electric 1-speed compact-chassis tire changer

TCX50A Air 1-speed compact-chassis tire changer

Add "W" to include wheel lift

Standard equipment

- ✓ Polymer mount head
- ✓ Standard bead lever
- ✓ Polymer protectors for bead lever, shovel and hi-grip jaw
- ✓ Inflation system
- ✓ Two storage pockets

Optional equipment

- 20-2833-1** Bead press arm upgrade
- 20-2834-1** Bead press system upgrade
- 20-2045-1** Wheel lift
- 20-2885-1** Storage shelf
- RP11-8-11100403** Blast inflator kit



See form **4042-T** for more tire changer accessories.

Because of continuing technological advancements, specifications, models and options are subject to change without notice.

0917JH

Copyright © 2017, Hunter Engineering Company

HUNTER
Engineering Company

www.hunter.com

Form 6689-T, 09/17
Supersedes form 6689-T, 04/17