

# i4

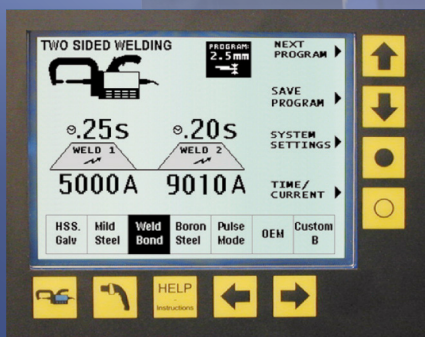
# PRO SPOT

QUALITY WELDING SYSTEMS

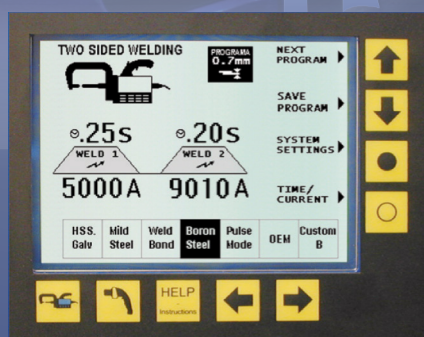
WATER-COOLED INVERTER SPOT WELDING SYSTEM



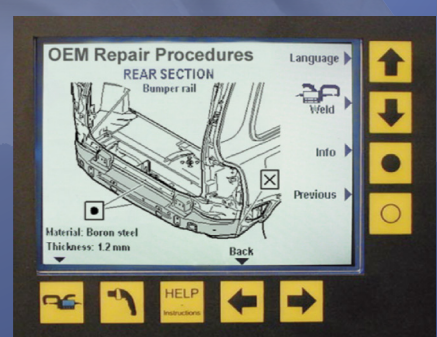
DESIGNED FOR ALL THE NEW ADVANCED HIGH STRENGTH STEELS



Weld Bonding



Boron Steel Welding



OEM, Training on-board



READY FOR TOMORROW'S STEELS - TODAY!



(Cable holder not shown)



Weld data logs are easily downloaded either by a Flash card, or USB drive.

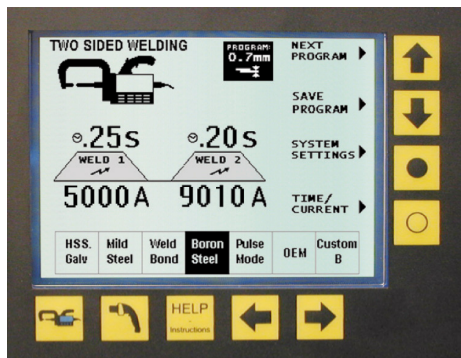
Materials being used in today's cars are ever changing. More than 10 different types of steel in one vehicle is not unusual. High strength steels from 480 MPA, 980 MPA, 1500 MPA and now 1700 MPA are not uncommon in these new vehicles.

**UPGRADABLE WELD SOFTWARE**

Always be up to date with the i4! Software is easily upgradeable with the Pro Spot Flash Card.

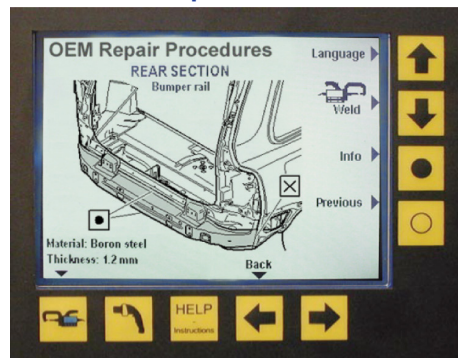


**Advanced Weld Features**



Choose the Material Type, choose the thickness and the i4 delivers the correct amount of weld amperage, and squeeze pressure and time. Pressure is maintained during the weld nugget cooling cycle

**OEM Repair Procedures**



The i4 features an on-board training program which is easily accessible by using the large monitor on the front panel where images and instructions are displayed. The i4 is equipped with an OEM programmable feature which is capable of providing the user with detailed instructions and weld specifications provided by the OEM's as they become available.

**Languages / Help**



Questions? No problem. In any weld screen, just push the 'HELP / INSTRUCTION' button. The on-board instructions will guide you in the language of choice. By using Flash Card technology the software can be easily upgraded as new data becomes available. The expansion capability is enormous and practically endless.

**OEM Approved! Technician Approved!**

OEM requirements are ever changing. Check in at [prospot.com](http://prospot.com) for a complete list of approvals.

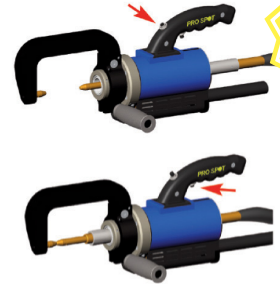
PS-500W & PS-600HP GUNS



PS-500W SPOT GUN FEATURES:

- Double-Acting Cylinder
- High squeeze pressure: >600Lbs with all extension arm sizes
- Water-Cooled
- Self-aligning electrodes. No adjustment needed after arm changes
- Wide-spreading electrodes for hard to reach areas
- X-Gun adaptive
- Replaceable electrode caps

DOUBLE-ACTING SPOT GUN



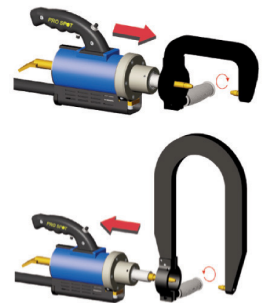
EXCLUSIVE FEATURE



PS-600HP SPOT GUN FEATURES:

- Double-Acting Cylinder
- High squeeze pressure: >1000Lbs with all extension arm sizes
- Water-Cooled
- Self-aligning electrodes. No adjustment needed after arm changes
- Wide-spreading electrodes for hard to reach areas
- X-Gun adaptive
- Replaceable electrode caps
- High Pressure C-Arms included

CHANGEABLE EXTENSION ARMS



AVAILABLE ARMS

The Pro Spot i4 comes with a variety of extension arms to accommodate any welding job situation.



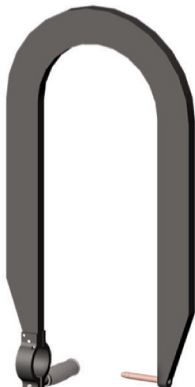
PS-302: C-Arm



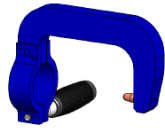
PS-52-5/8: Wheel House Arm



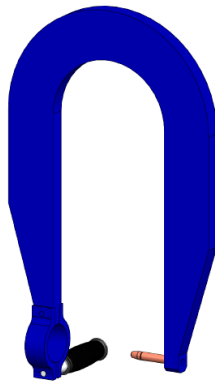
PS-305: 508mm C-Arm



PS-503-W: 600mm C-Arm (optional)



PS-307 HP C-Arm (Included w/ PS-600HP)



PS-308 HP 508mm C-Arm (Included w/ PS-600HP)

The New C2X Arm (optional)

CX-i4: C-X Adapter



Switch between C and X in seconds! No electrode alignment necessary!

The X-type Adapter is used on applications where the C-type can't reach. 90% of all welds can be done with C-type arm, but for some radiator support and truck bed pinch welds, the X-Adapter excels. This patented invention from Pro Spot now makes it possible to weld where you never could before!



Wheel House welding with the PS-52-5/8 Arm makes it possible to weld the most difficult applications.

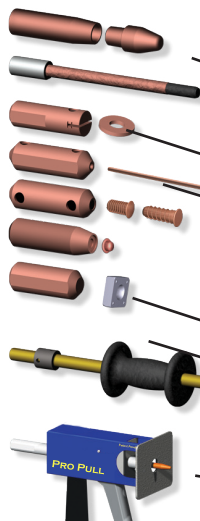


For deeper needs use the Pro Spot extension arms (PS-305 and PS-503-W). They are self-aligning and quick to install.



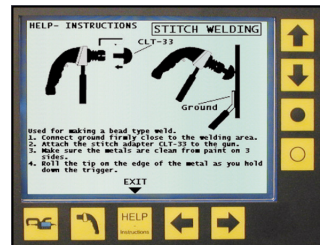
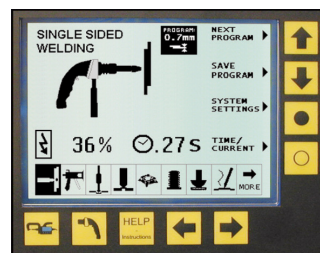
Spot welding of quarter panel using C-Arm (PS-302).

## SINGLE-SIDED GUN FEATURES



i4 comes standard with 4-cable system. That means quicker change between 2-sided and 1-sided welding. The i4 is pre-programmed with 60 Single-Sided programs.

- Single-Sided Welding
- Carbon Shrinking
- Stitch Welding
- Washer Welding
- Nail Welding
- Bolt and Nut Welding
- Moulding Clip Rivet Welding
- Contact Shrinking
- Spot Hammer Dent Pulling
- Pro Pull Dent Pulling



## i4 OPTIONS AND ACCESSORIES

**Weld Cover**  
80-0001  
(optional)



**Tip Dresser**  
PLT-51  
(optional)



**Weld Cap, F-Cap**  
PS-023  
(optional)



**C To X Adapter**  
CX-i4 (optional)



**Pro Pull**  
PRO-66  
(optional)

## Built-in Synergic MIG Welder

The i4 features an easy upgrade to include a PR-205MV MIG Welder. This feature allows the convenience of spot and MIG welding in one unit!



PR-205MV works on 230v or 115v current.

Manufactured by:  
Pro Spot International, Inc. U.S.A.



Toll Free: 1-877-PRO SPOT  
Phone: +1 760-407-1414  
Fax: +1 760-407-1421  
E-Mail: info@prospot.com  
Web: www.prospot.com



## i4 Technical Specifications

**Input Voltage:** 3 Phase  
208-240V 50/60 Hz.  
400-420-480 50/60 Hz.  
**Welding Amperage:** 12,500A Max (3-Phase)  
**Welding Cable Length:** 8' (2.5m) Standard

**Electrode Pressure:**  
Standard Gun: At 90 PSI (6.2 bar)-560 Lb (250 DaN)  
Part No: PS-500W (Blue Cylinder) At 116 PSI (8 bar)-720 Lb (320 DaN)  
At 135 PSI (9.3 bar)-830 Lb (370 DaN)

High Pressure Gun: At 90 PSI (6.2 bar)-1060 Lb (470 DaN)  
Part No: PS-600 (Black Cylinder) At 116 PSI (8 bar)-1370 Lb (610 DaN)  
At 135 PSI (9.3 bar)-1590 Lb (710 DaN)

**Cooling System:** Air (2 Fans), Compressed Air (Weld Gun and Weld Cables)  
Water Cooling (Inverter, Transformer, Welding Gun)

**Micro Processor:** i4 Upgradeable Software Platform  
**Protection:** IP21

**Patents (3):** no. 5,239,155, no. 6,706,990, no. 6,539,770  
**Dimensions (Welder):** 28" (71.1cm) x 12.5" (31.8cm) x 50" (127cm)  
**Shipping Weight:** 373lb (169kg)

